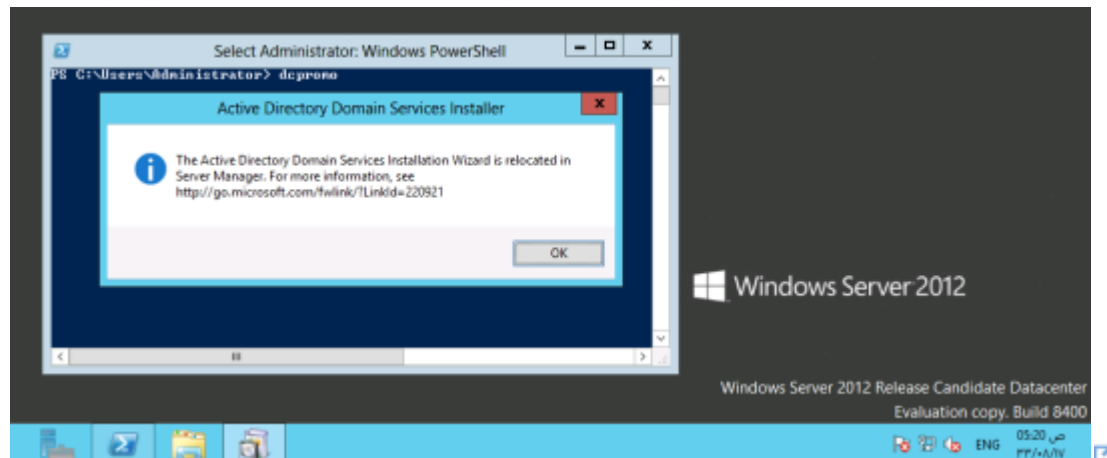




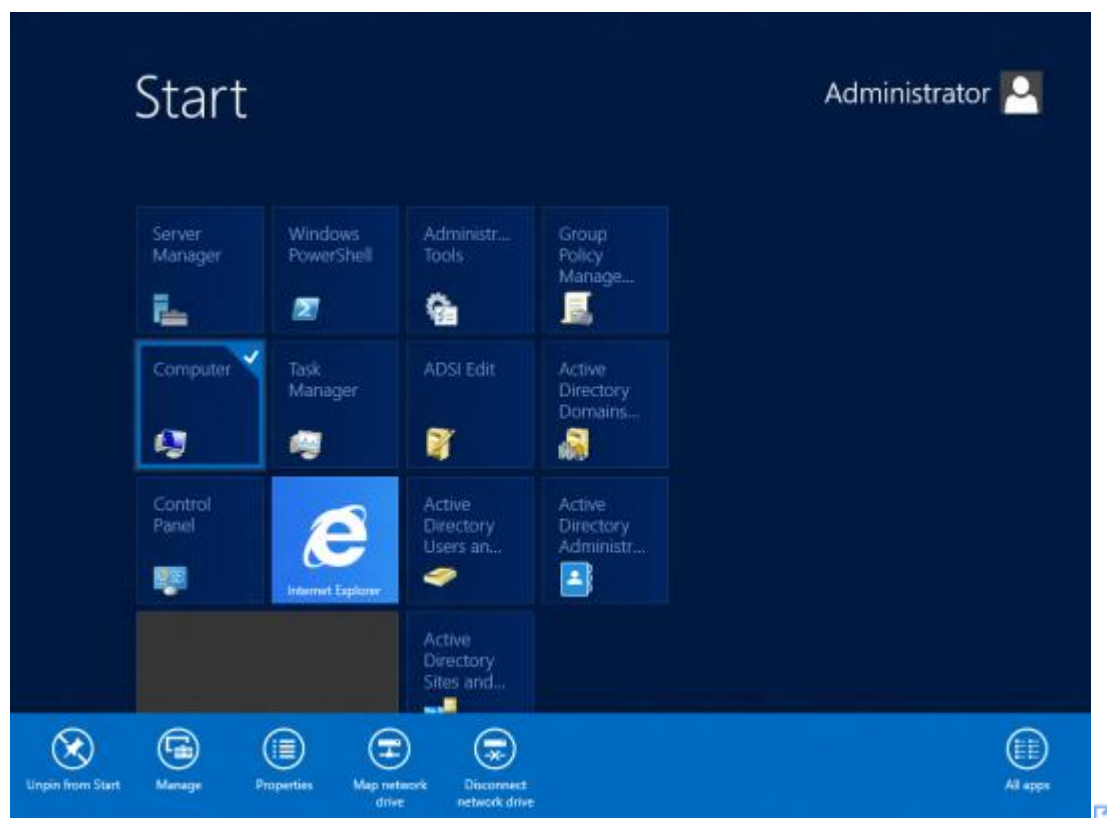
Step by Step Guide for Setting Up Windows Server 2012 Domain Controller

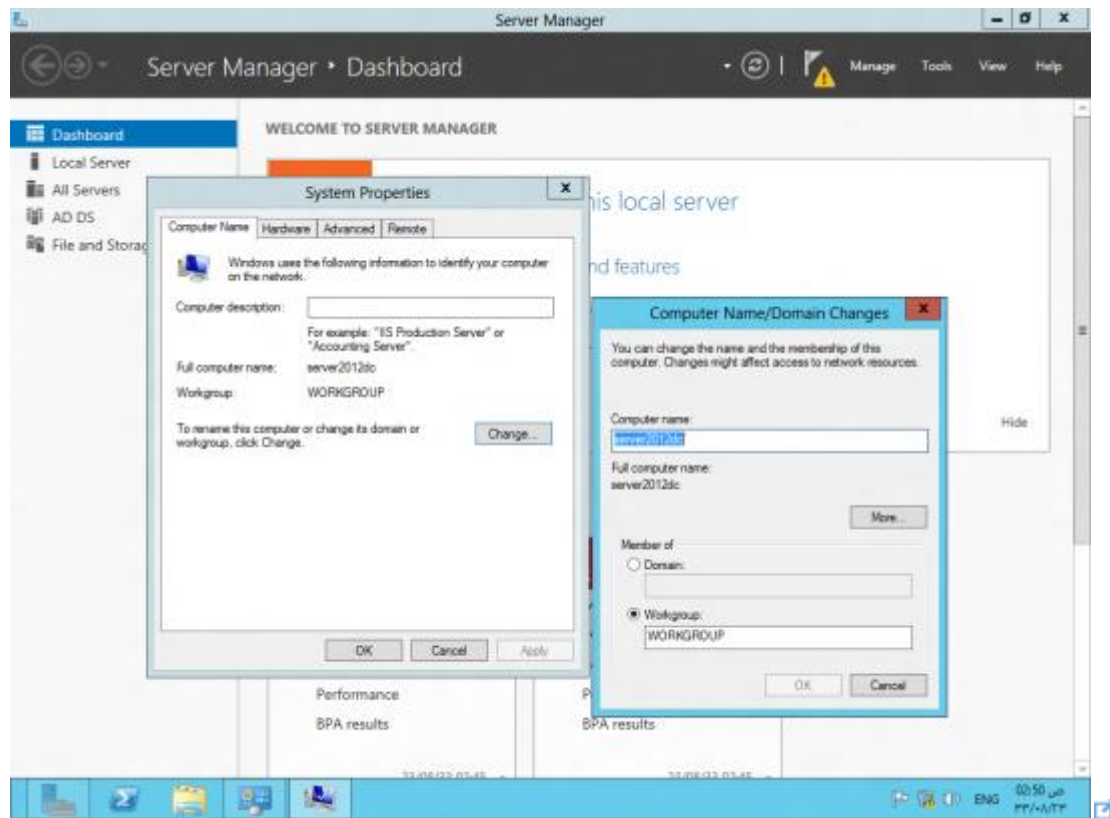
In Windows Server 2012, **dcpromo** has been deprecated.

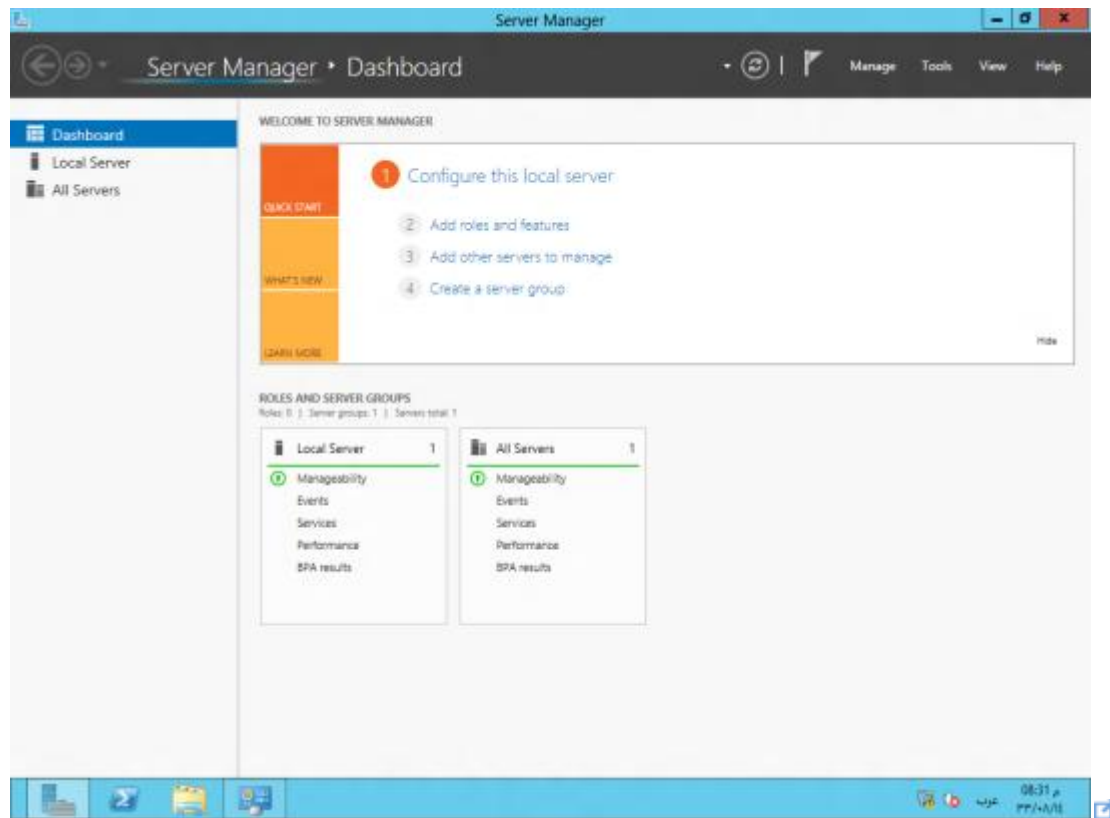


In order to make the windows server 2012 domain controller we will install ADDS (Active Directory Domain Services) role from the server manager on Windows Server 2012.

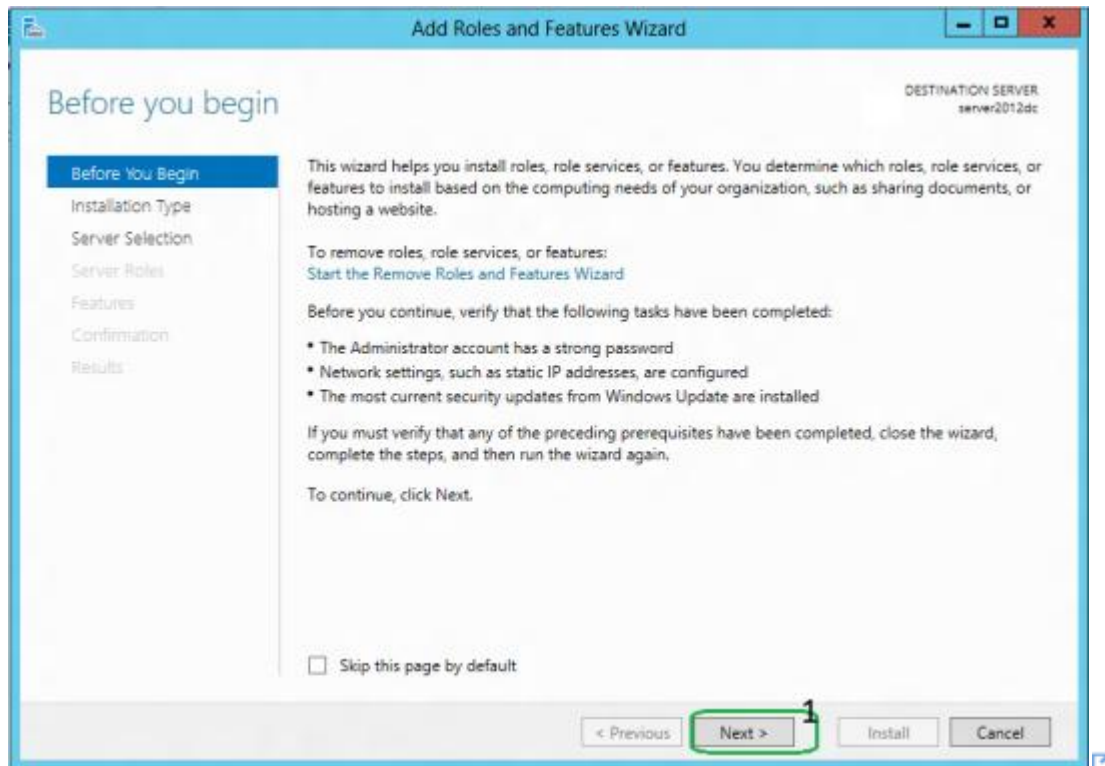
First we will change the server name let say **server2012dc** and the IP address 192.168.1.11





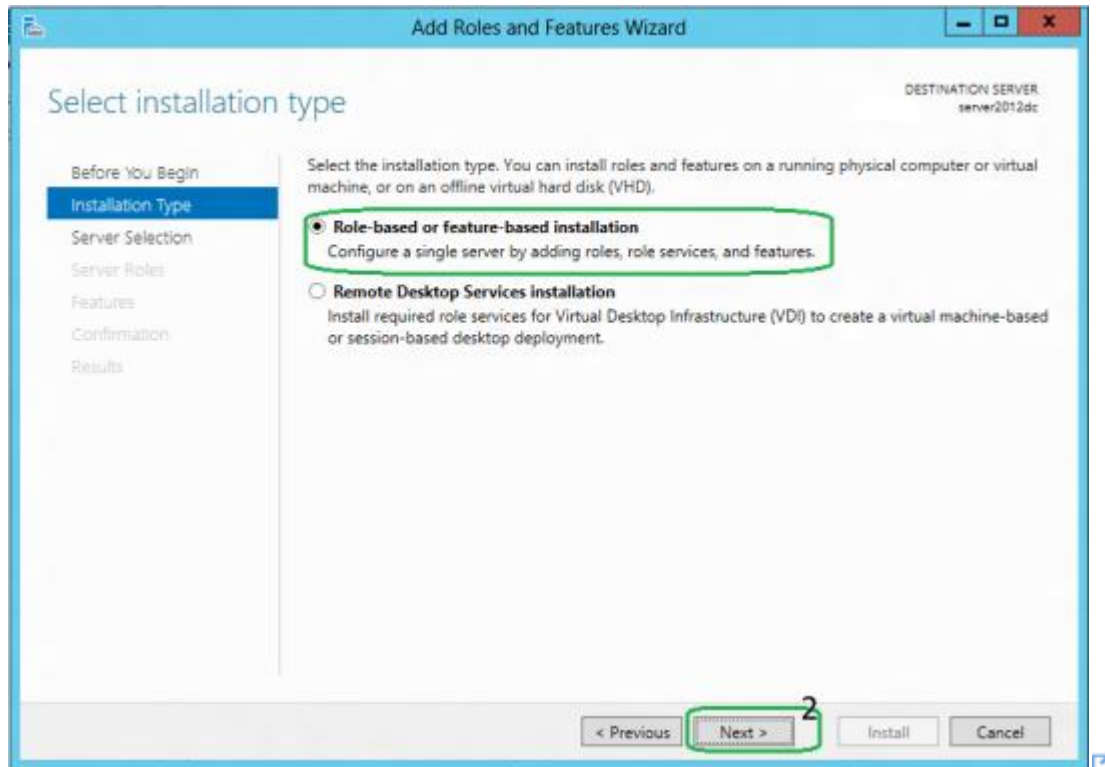


“Before You Begin” screen provides you basic information such as configuring strong passwords, IP addresses and Windows updates.

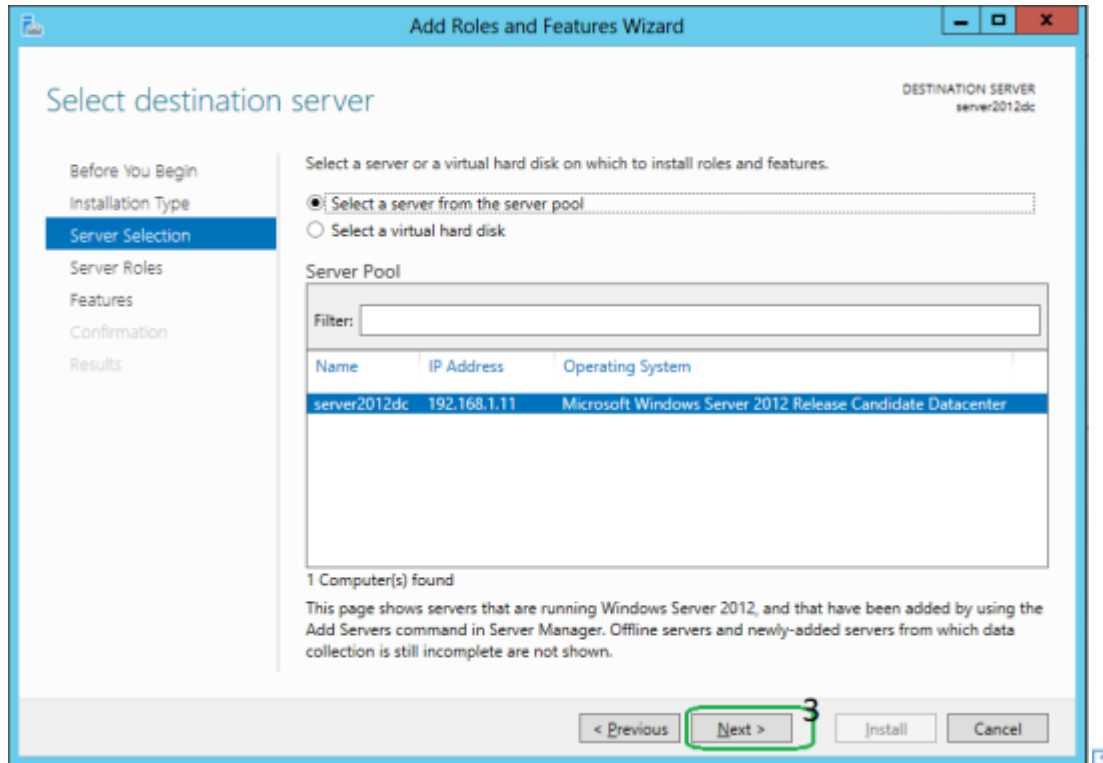


On **Installation Type** page, select the first option “**Role-based or Feature-based Installation**”.

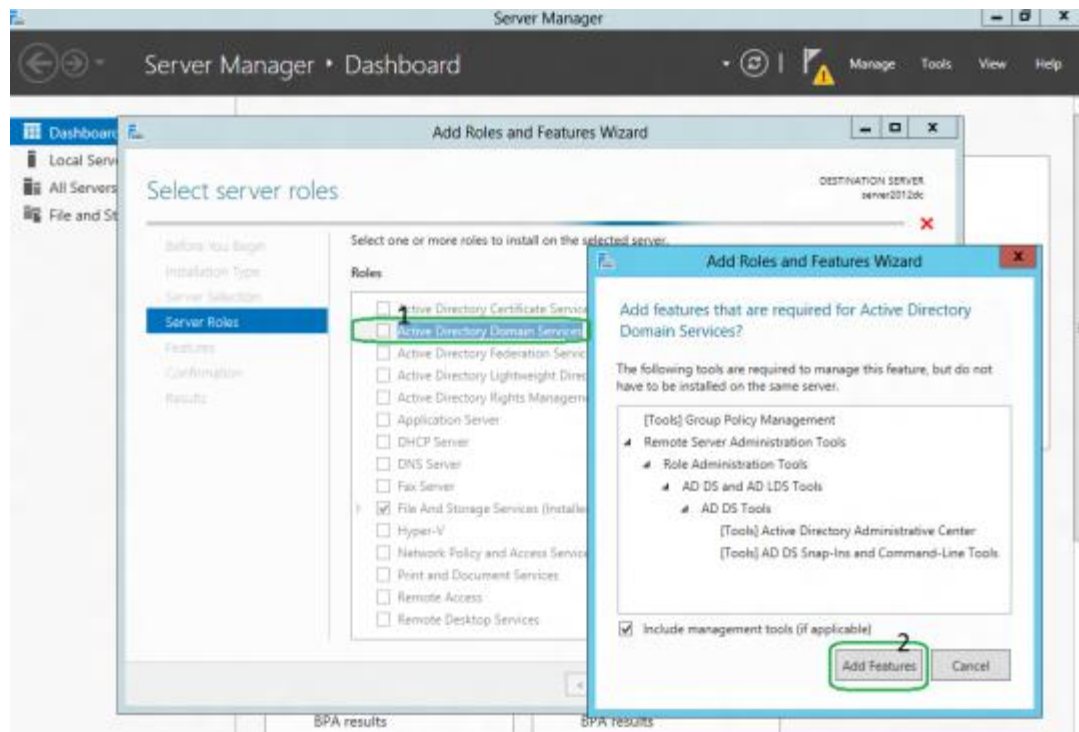
Scenario-based Installation option applied only to Remote Desktop services.



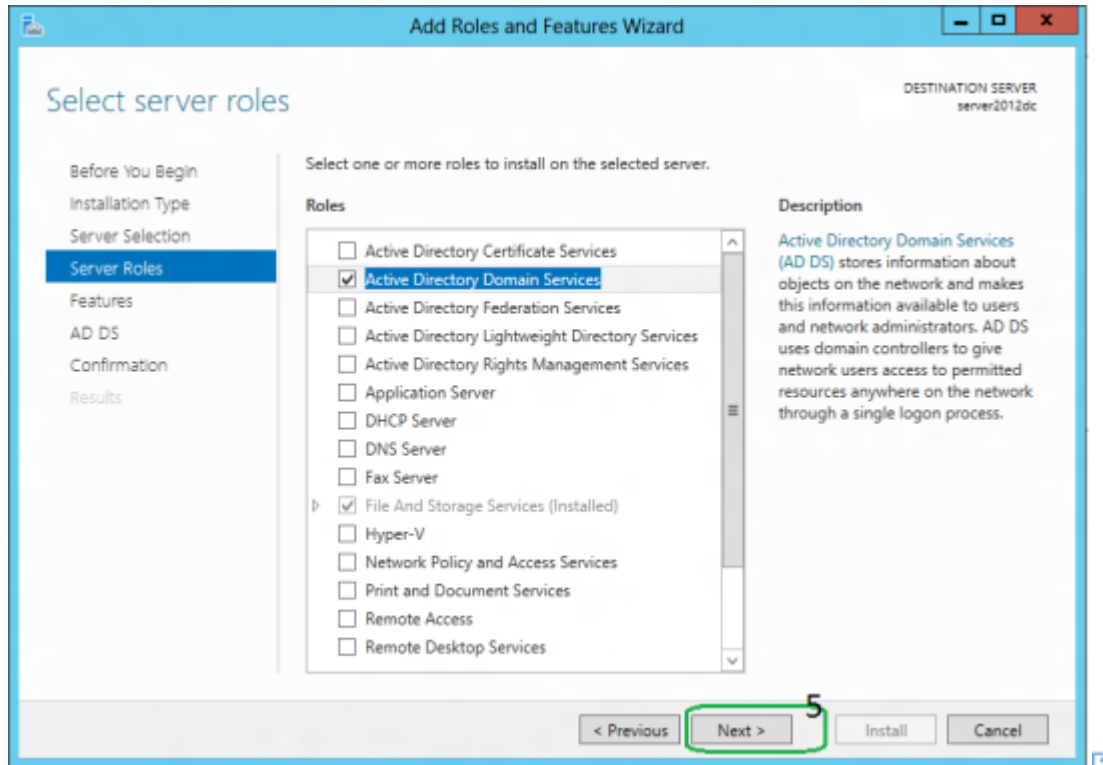
On the “Server Selection” Page, **select a server from the server pool** and click next.



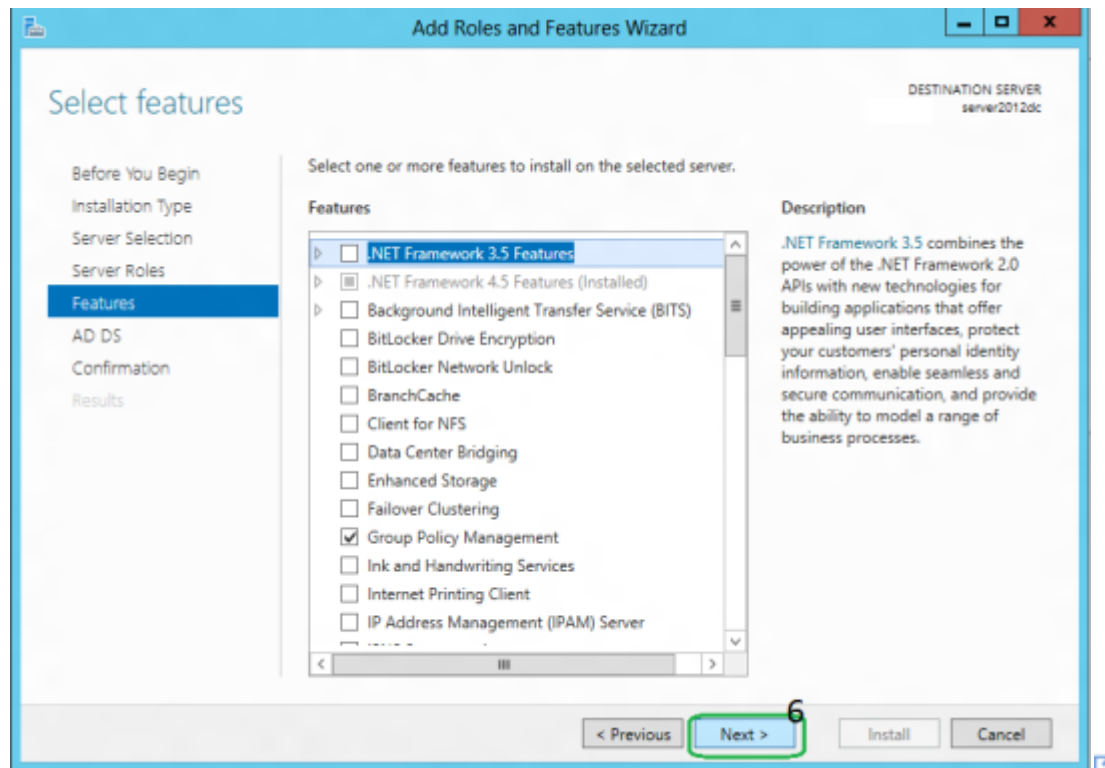
To install AD DS, select **Active Directory Domain Services** in turn it will pop-up to add other AD DS related tools. Click on **Add Features**.



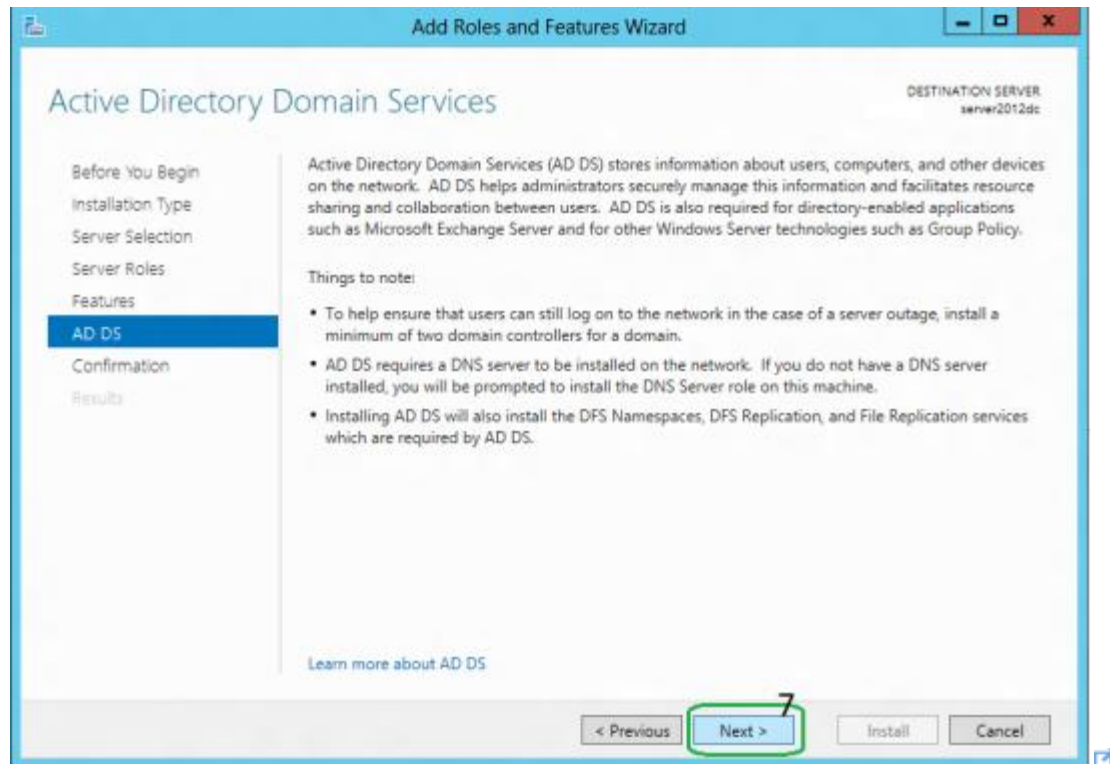
After clicking “Add Features” above, you will be able to click “Next >” as shown in the screen below.



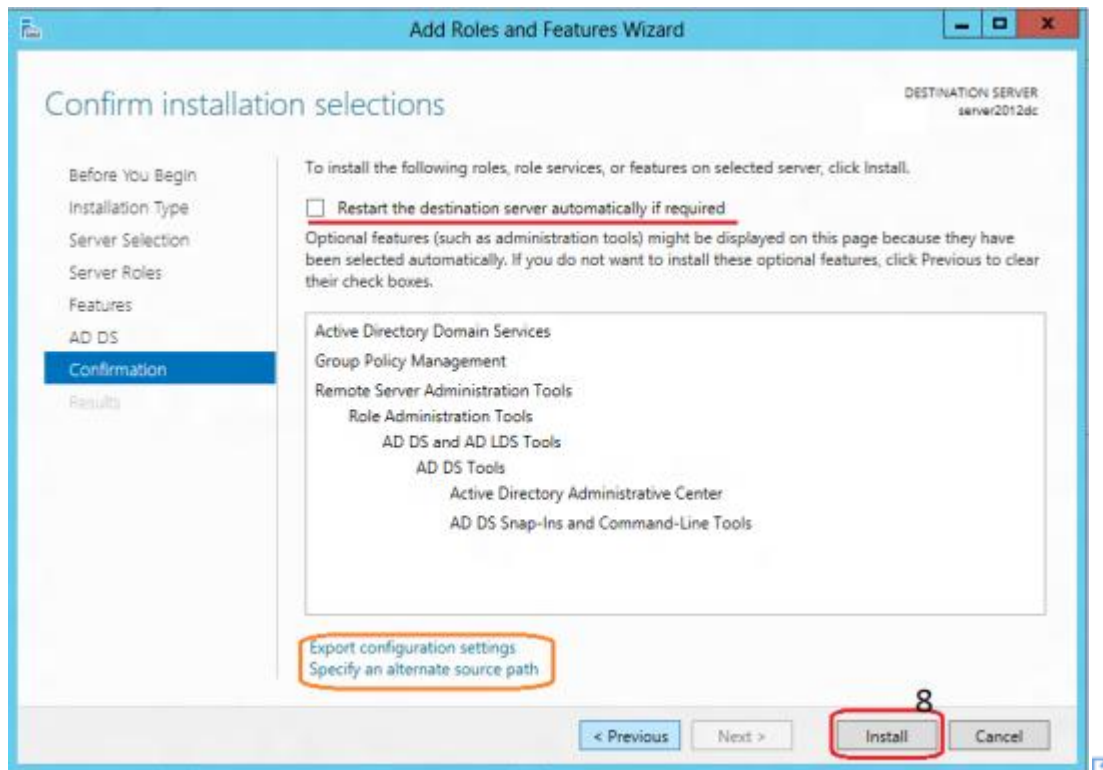
On the “**Select Features**” Page, **Group Policy Management** feature automatically installed during the promotion. Click next.



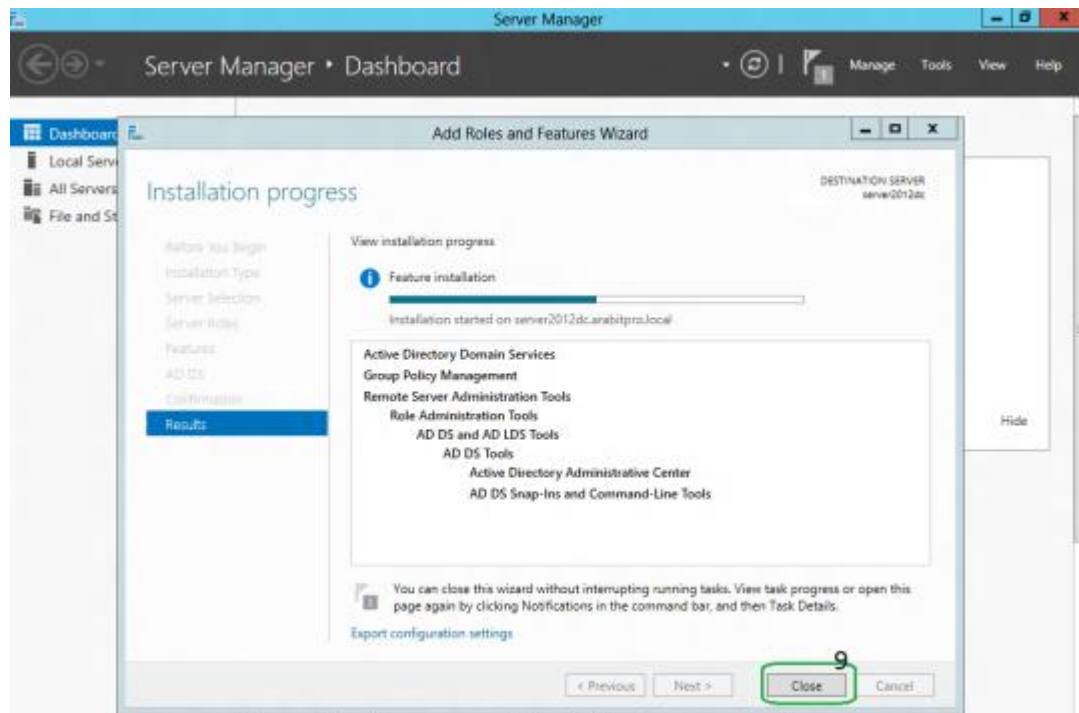
On the “Active Directory Domain Services” page, it gives basic information about AD DS. Click Next.



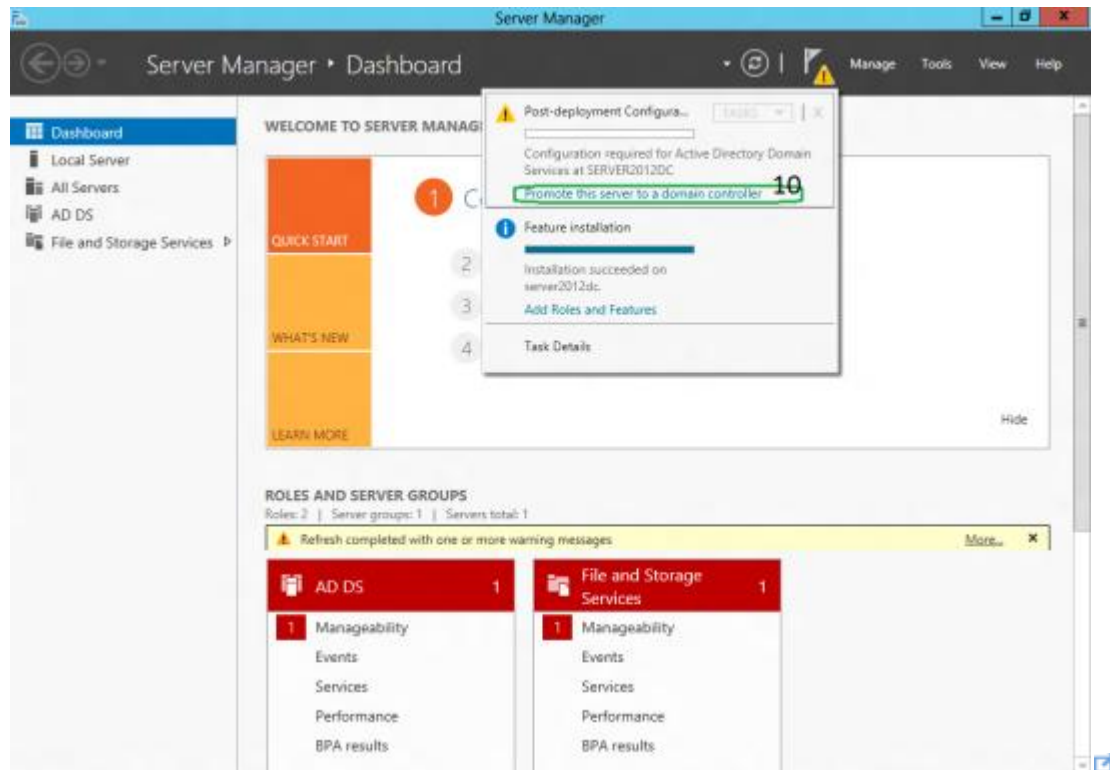
On the “Confirmation” Page, You need to confirm this to continue with this configuration. It will provide you an option to export the configuration settings and also if you want the server to be restarted automatically as required.



After clicking “**Install**” the selected role binaries will be installed on the server.

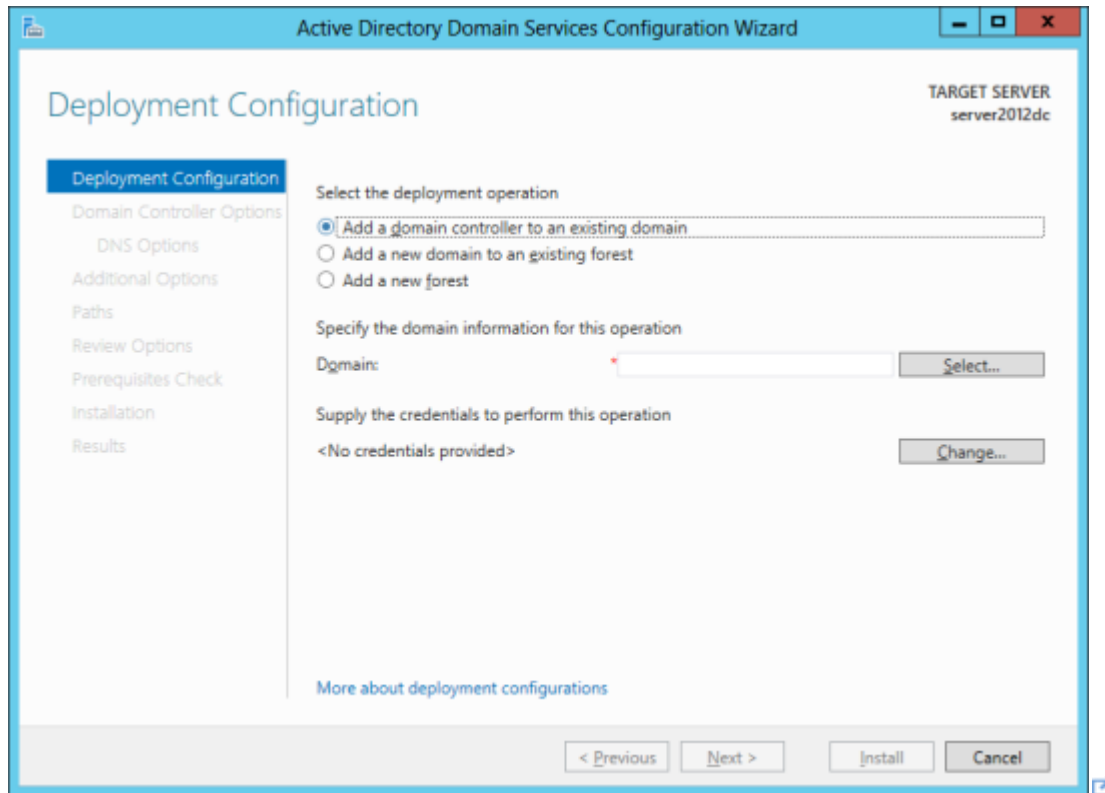


After “Active Directory Domain Services” role binaries have been installed and now it is time to promote the server to a Domain Controller.



PROMOTING WINDOWS 2012 SERVER TO DOMAIN CONTROLLER

To create a new AD forest called “ArabITPro.local”, select add a new forest.



Type the name

The screenshot shows the 'Active Directory Domain Services Configuration Wizard' window. The title bar reads 'Active Directory Domain Services Configuration Wizard'. The main window has a blue header with the title 'Deployment Configuration' and a 'TARGET SERVER' label with the value 'server2012dc'. On the left is a navigation pane with the following items: 'Deployment Configuration' (selected), 'Domain Controller Options', 'DNS Options', 'Additional Options', 'Paths', 'Review Options', 'Prerequisites Check', 'Installation', and 'Results'. The main content area is titled 'Select the deployment operation' and contains three radio buttons: 'Add a domain controller to an existing domain', 'Add a new domain to an existing forest', and 'Add a new forest' (which is selected). Below this is a section titled 'Specify the domain information for this operation' with a label 'Root domain name:' and a text box containing 'ArabITPro.local'. At the bottom of the window are four buttons: '< Previous', 'Next >', 'Install', and 'Cancel'. The 'Next >' button is highlighted with a green rectangle and has a small '11' above it.

Specify the FFL, DFL, whether or not it should be a DNS Server and also the DSRM administrator password. As you can see, it has selected the GC option by default and you cannot deselect it. The reason for this is that is the very first DC of the AD forest and at least one needs to be a GC.

Active Directory Domain Services Configuration Wizard

Domain Controller Options

TARGET SERVER
server2012dc

Deployment Configuration

Domain Controller Options

DNS Options

Additional Options

Paths

Review Options

Prerequisites Check

Installation

Results

Select functional level of the new forest and root domain

Forest functional level: Windows Server 2008 R2

Domain functional level: Windows Server 2012 Release C

Specify domain controller capabilities

☒ Domain Name System (DNS) server

☒ Global Catalog (GC)

☐ Read only domain controller (RODC)

Type the Directory Services Restore Mode (DSRM) password

Password:

Confirm password:

More about domain controller options

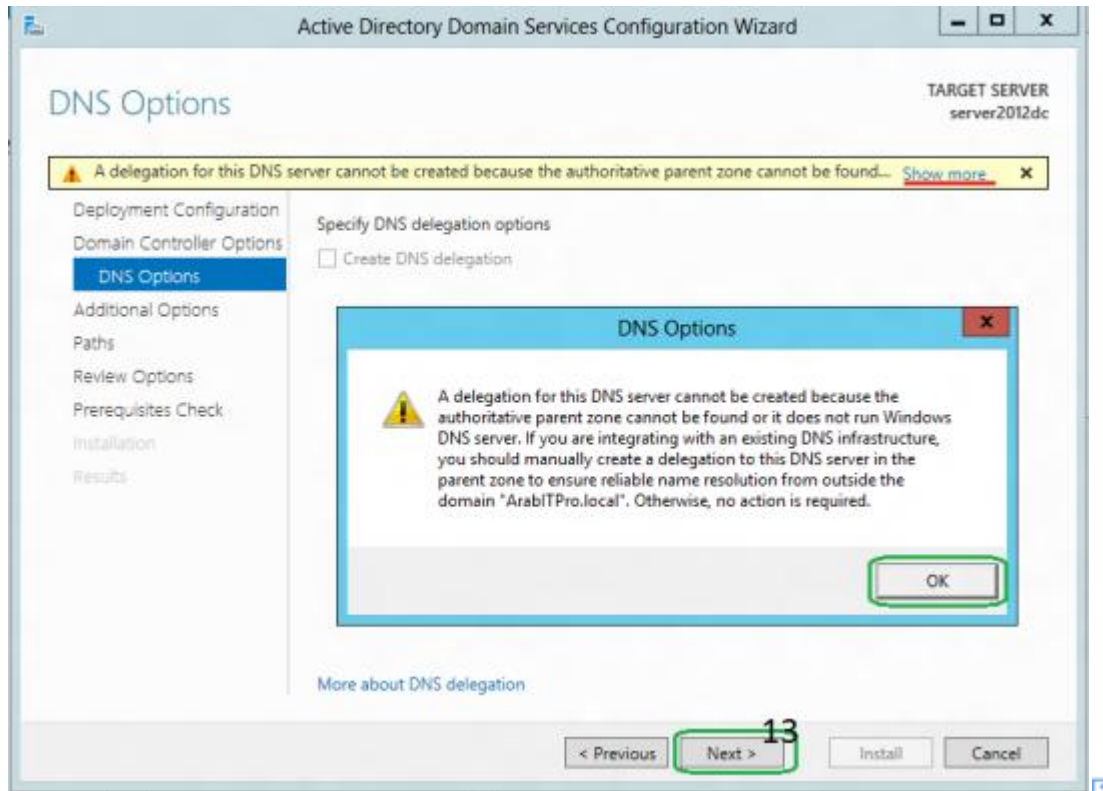
< Previous

Next > 12

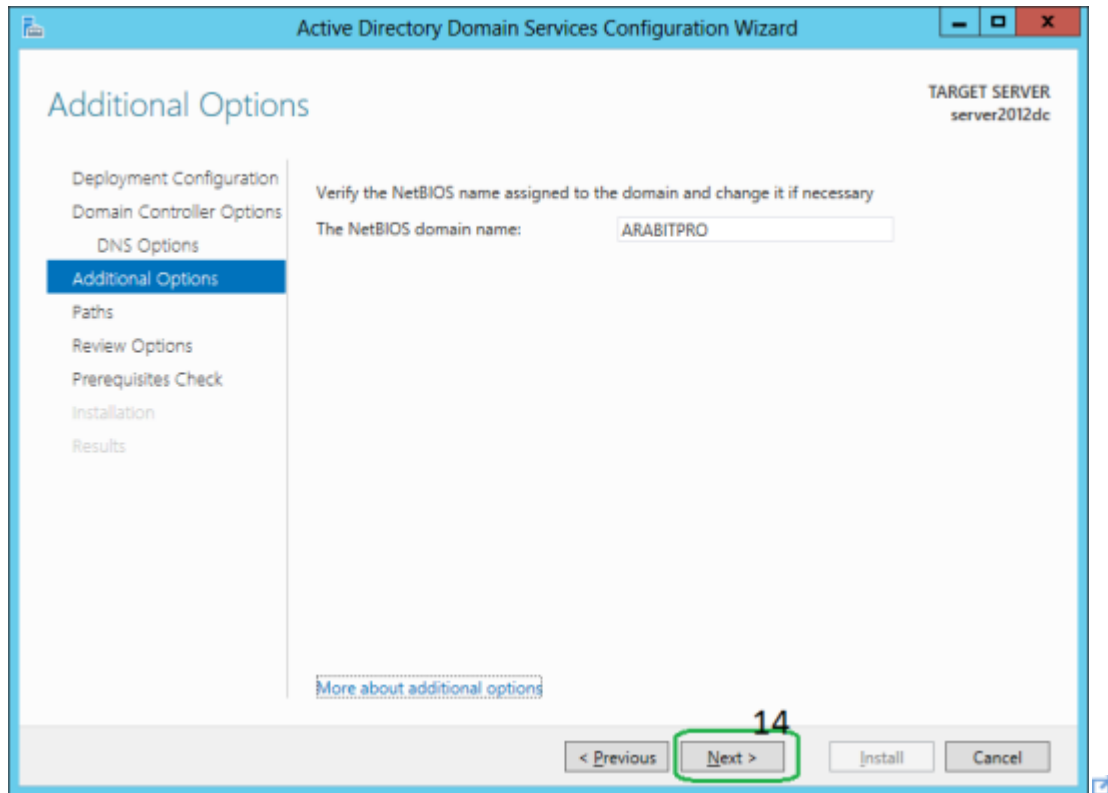
Install

Cancel

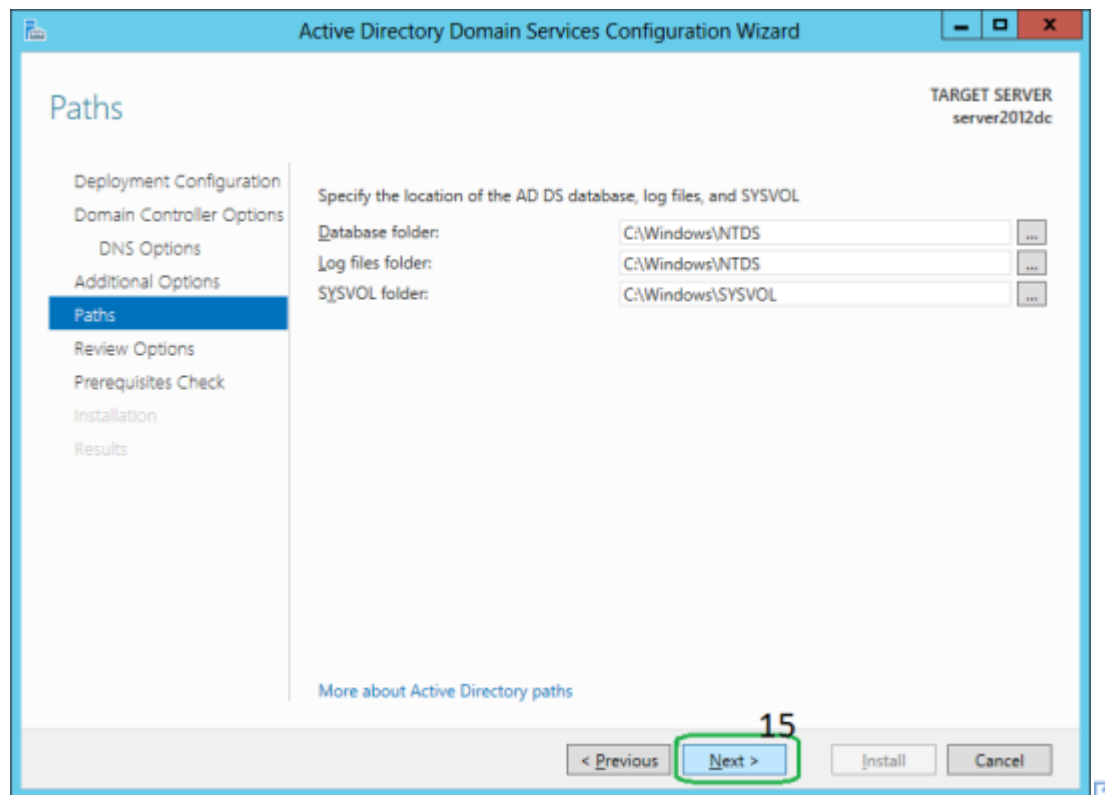
DNS delegation warning.



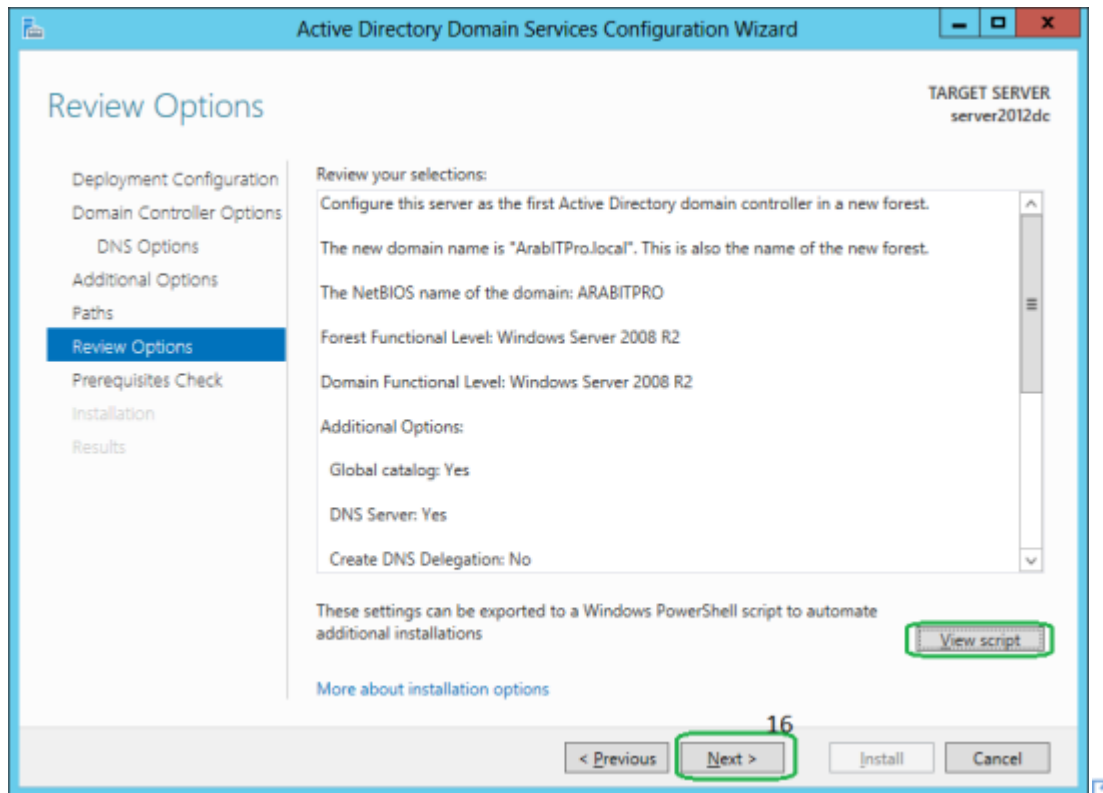
Checks the NetBIOS name already assigned.



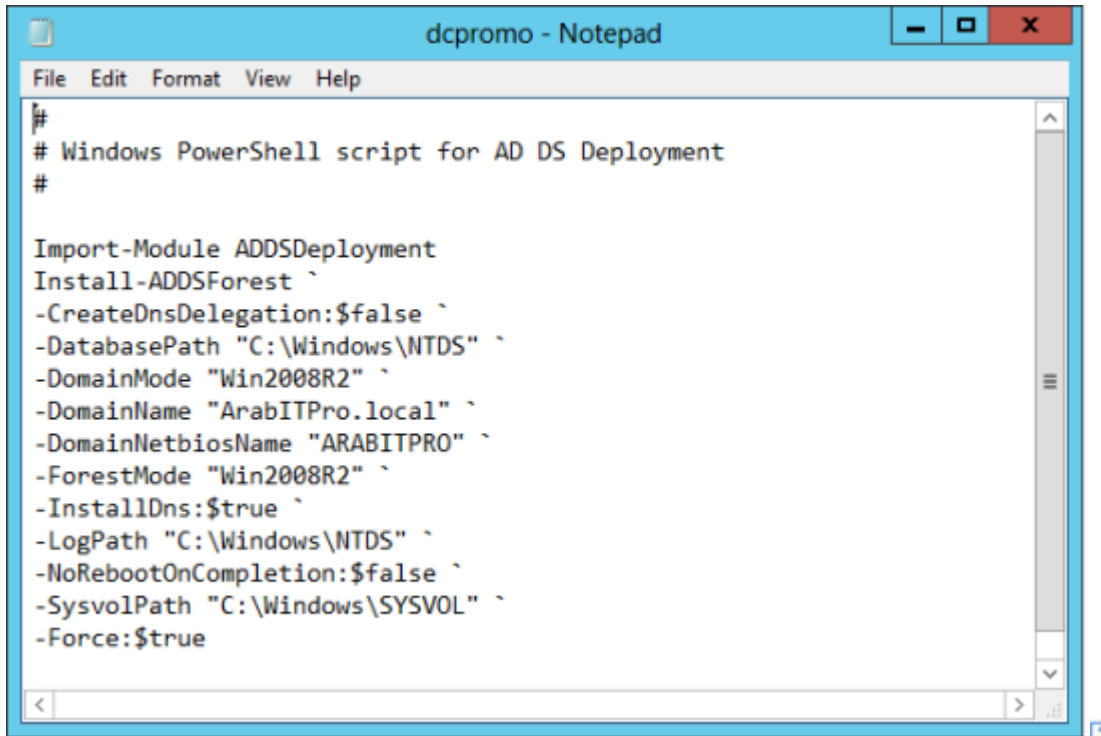
Specify the location of the AD related folders and then click next.



Summary Of All Installation Options/Selections.

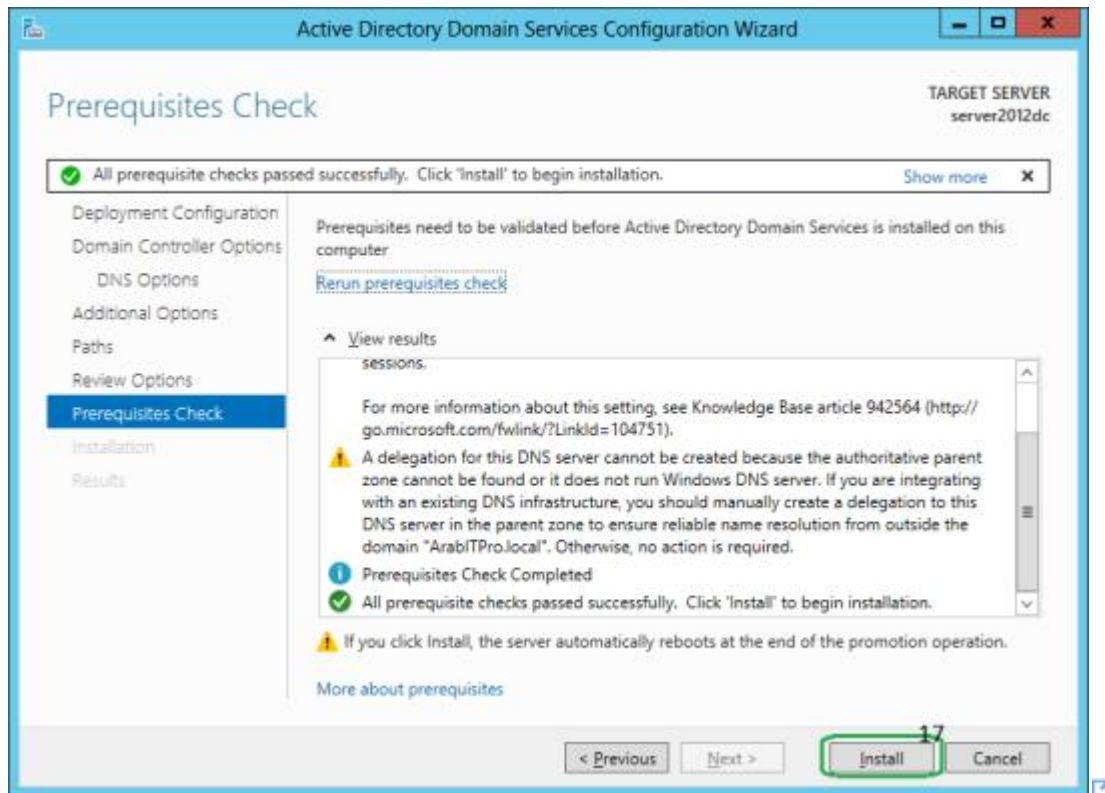


Click View script for single command line powershell script for dcpromo.

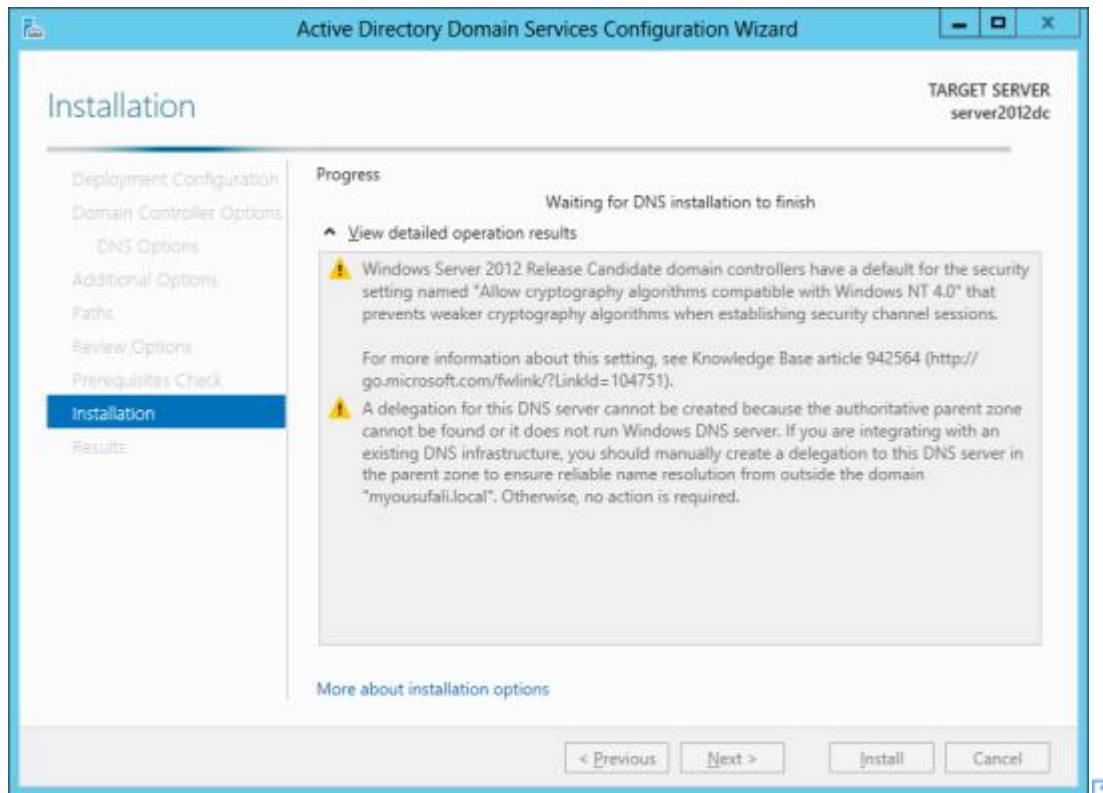


```
#  
# Windows PowerShell script for AD DS Deployment  
#  
  
Import-Module ADDSDeployment  
Install-ADDSForest `   
-CreateDnsDelegation:$false `   
-DatabasePath "C:\Windows\NTDS" `   
-DomainMode "Win2008R2" `   
-DomainName "ArabITPro.local" `   
-DomainNetbiosName "ARABITPRO" `   
-ForestMode "Win2008R2" `   
-InstallDns:$true `   
-LogPath "C:\Windows\NTDS" `   
-NoRebootOnCompletion:$false `   
-SysvolPath "C:\Windows\SYSVOL" `   
-Force:$true
```

Before the actual install of AD, all prerequisites are checked. If All prerequisite checks are passed successfully then click **Install**.



When you click Install, DNS and the GPMC are installed automatically.



After the promotion of the server to a DC finished server restart automatically. Once the server is booted and you logon to it, click on Server Manager | Tools , will notice that following have been installed :

- Active Directory Administrative Center
- Active Directory Domains and Trusts
- Active Directory Module for Windows PowerShell
- Active Directory Sites and Services
- Active Directory Users and Computers
- ADSI Edit
- DNS
- Group Policy Management

